



Sleek, stylish, powered by AI



Dell 14 Plus

DB14250

A sleek stylish 14-inch laptop with on-device Copilot+ featuring the latest Intel® Core™ Ultra processors (Series 2), designed to deliver uncompromised performance for the newest AI experiences and incredible battery life for seamless multitasking on the go.

Latest Intel® Core™ Ultra processors (Series 2)

Built from the ground up with Intel's latest and most advanced client compute engines designed to deliver the newest AI experiences, ultimate power efficiency.

CPU: Ideal for real time multi-tasking and AI workload such as noise cancellation and instant transcription.

GPU: Ideal for AI-accelerated digital content creation and video editing with creation apps like Adobe.

NPU: Ideal for running AI features like Microsoft Studio Effects during video calls. Supports upto 48 TOPS

Sleek, stylish modern new design

Thin and light 14-inch laptop in a stylish new design that maximizes performance and portability, ensuring you stay efficient and connected on the move. Available in a soothing neutral Ice Blue color with smooth rounded edges and a clean logo for a fresh new and modern look.

Captivating Audio Visuals

Enjoy vivid colors and sharp details on a spacious 16:10 panel with upto QHD+ resolution, 300 nits brightness.

With Stereo quality speakers, powered by Waves Maxx Audio Pro and spatial audio with Dolby Atmos, your content truly comes to life.

Ideal for photo or video editing, coding, collaborating or even watching movies.

Be unstoppable with AI

Designed and built to spark and amplify creativity and productivity. Advanced productivity with intelligent real time assistance and incredible on device AI experiences with **Copilot+** like Recall, Live Captions, Cocreator and Windows Studio Effects.

Secure and reliable.

Crafted with high quality materials and designed for durability, all Dell Plus laptops undergo rigorous military-grade testing to ensure exceptional reliability as you put it through the rigors of everyday use.

And an additional layer of security with the built-in Trusted Platform Module to protect your data.





Productivity looks better than ever

Stylish 14-inch laptop with on-device Copilot+ featuring Intel® Core™ Ultra processors, stunning performance that powers the newest AI experiences and incredible battery life for on-the-go multitasking.

Tackle the newest AI experiences with ease. Do more in less time with on-device AI seamlessly and efficiently without draining your battery. Get real time intelligent assistance anywhere you go. Let AI draft quick emails, summarize documents, create a blog post or custom visuals.

Stylish inside and out

Sleek modern comfortable device

16.99 mm at its thickest point and starting at 1.55 kgs² with a clean new look and a comfortable 180-degree hinge.

Up to QHD+ resolution

A stunning tall screen with sharp vivid visuals.

Plenty of Ports

Connect easily wherever you are with a variety of ports.

Stereo quality audio

Stereo quality speakers for an immersive surround sound experience.

Built-in Webcam

Featuring FHD+ webcam¹ for crystal clear video calls.

Amazing Battery life

An impressive battery life of up to 22 hours⁴.

WiFi 7

Experience fast, reliable internet connectivity⁶.

Fingerprint Reader

Optional Finger print reader³ for instant, secure access.

AI noise cancellation

Enjoy clear distraction free calls and recordings for an enhanced communication experience.

Express Charge

Quickly boost your charge with ExpressCharge, recharging your battery to 80% in just 60 minutes⁵.

Built-in NPU

Equipped with the latest Intel Core Ultra processors with built-in NPU to tackle the newest AI experiences with ease.

Disclaimers:

¹ Configurations with FHD+ touch panel come with FHD+ webcam. Configurations with the QHD+ non-touch panels come with FHD+ IR camera that provides super accurate imaging, enabling earlier identification, at a greater distance of faster moving and smaller objects compared to other infrared cameras.

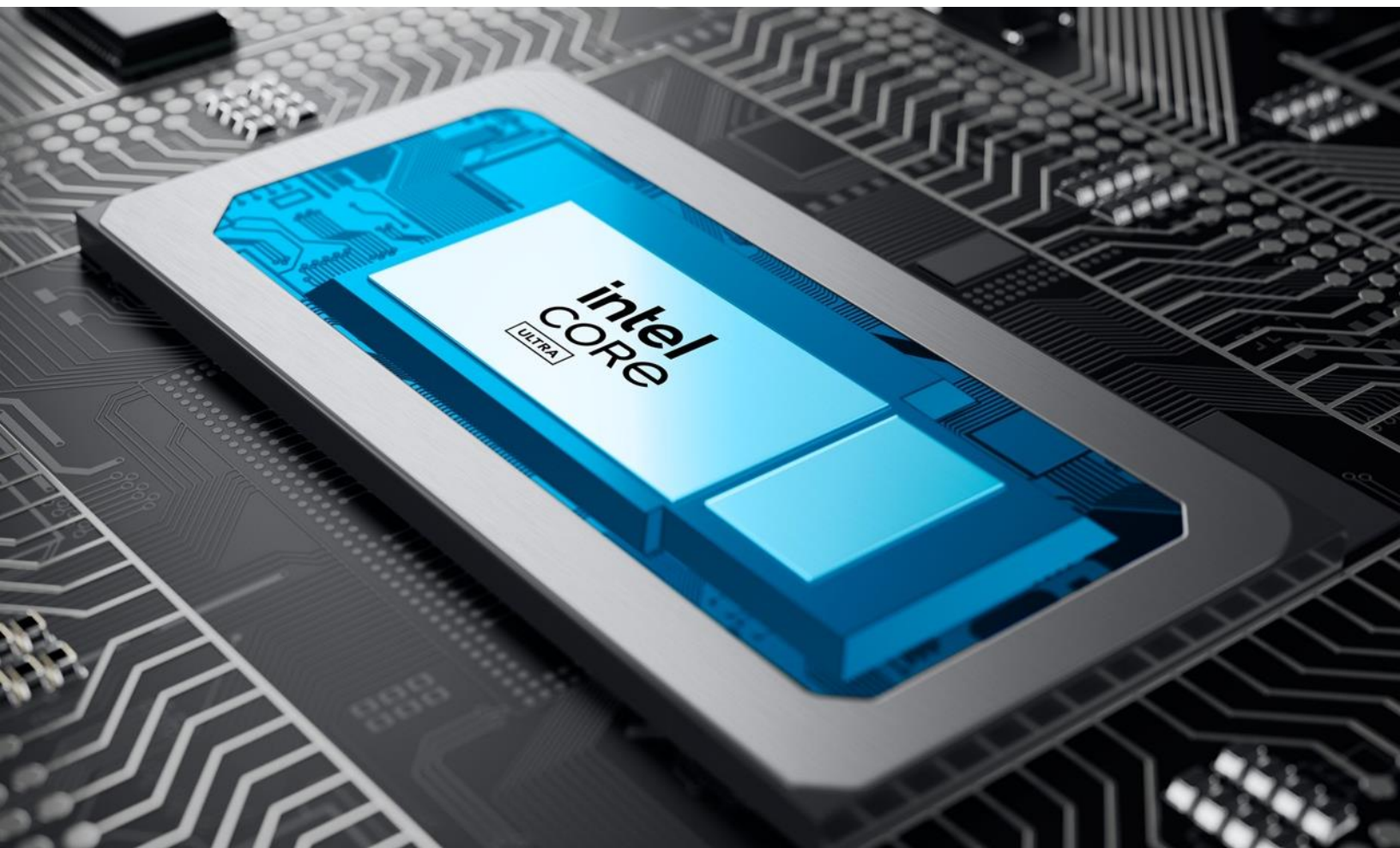
² Weights vary depending on configurations and manufacturing variability.

³ Configs with Touch panels come with built-in FPR, configurations with non-touch panels come with both FPR and non FPR options.

⁴ Battery life: Battery life may be significantly less than the test results and varies depending on product configuration and use, software, usage, operating conditions, power management settings and other factors. Tested configurations may not be available in all regions/countries at all times. Maximum battery life will decrease with time.

⁵ Express Charge: ExpressCharge must be enabled within Dell Power Manager software. System must be powered off or in hibernation mode for ExpressCharge feature to function. After charging has reached the stated capacity, charging speed will return to normal speed. Recommended for use with the provided Dell power adapter; not recommended with a smaller capacity power adapter. Charging times may vary.

⁶ Wi-Fi 7 certified products will roll out in accordance with the Wi-Fi Alliance certification schedule throughout 2024. Wi-Fi 7 requires the latest Wi-Fi Alliance certification, Windows HLK certified device driver, hardware update, supported Windows OS version and compatible router.



Intel® Core™ Ultra Processors

Effortlessly tackle the newest AI experiences.

Built from the ground up with Intel's latest and most advanced client compute engines designed to deliver the newest AI experiences, ultimate power efficiency, and full day cooler and quieter performance that creators and workers need, wherever they are.

Intel® Core™ Ultra processors feature dedicated engines for specific tasks, resulting in exceptional performance, efficiency, & battery life.

CPU

Ideal for real time multi-tasking and AI workload such as noise cancellation and instant transcription.

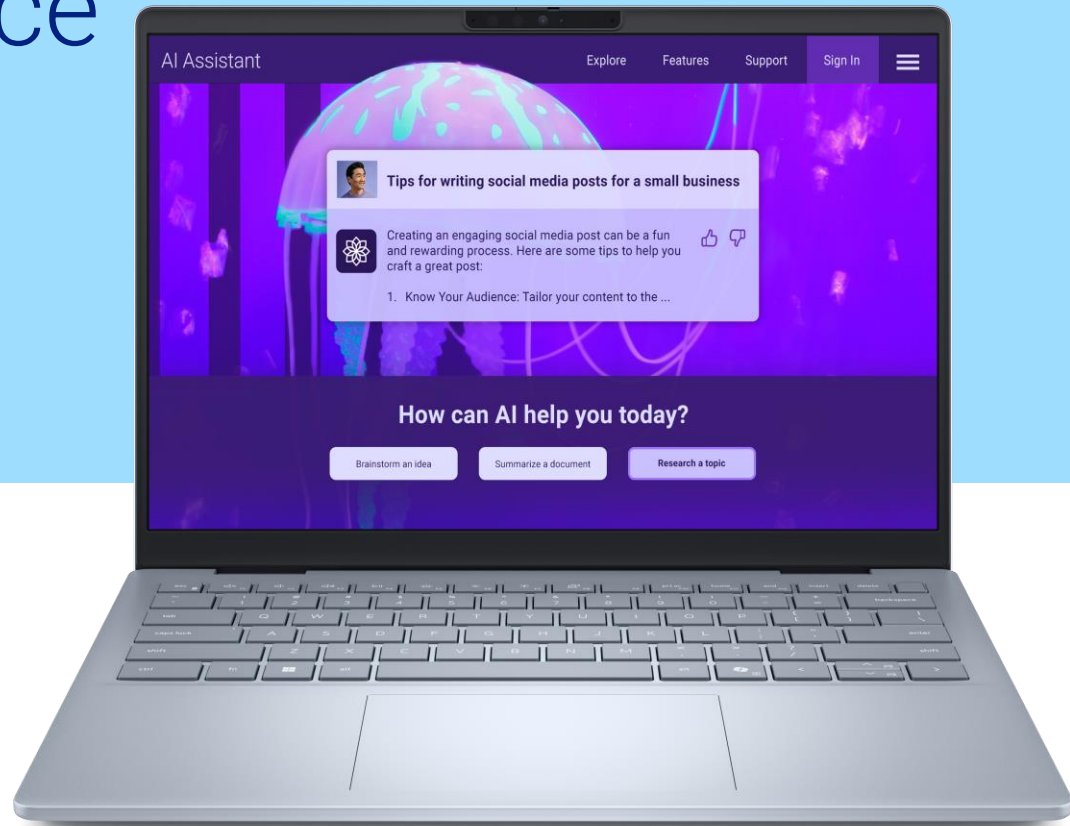
GPU

Ideal for AI-accelerated digital content creation and video editing with creation apps like Adobe.

NPU

Ideal for running AI features like Microsoft Studio Effects during video calls. Supports upto 48 TOPS

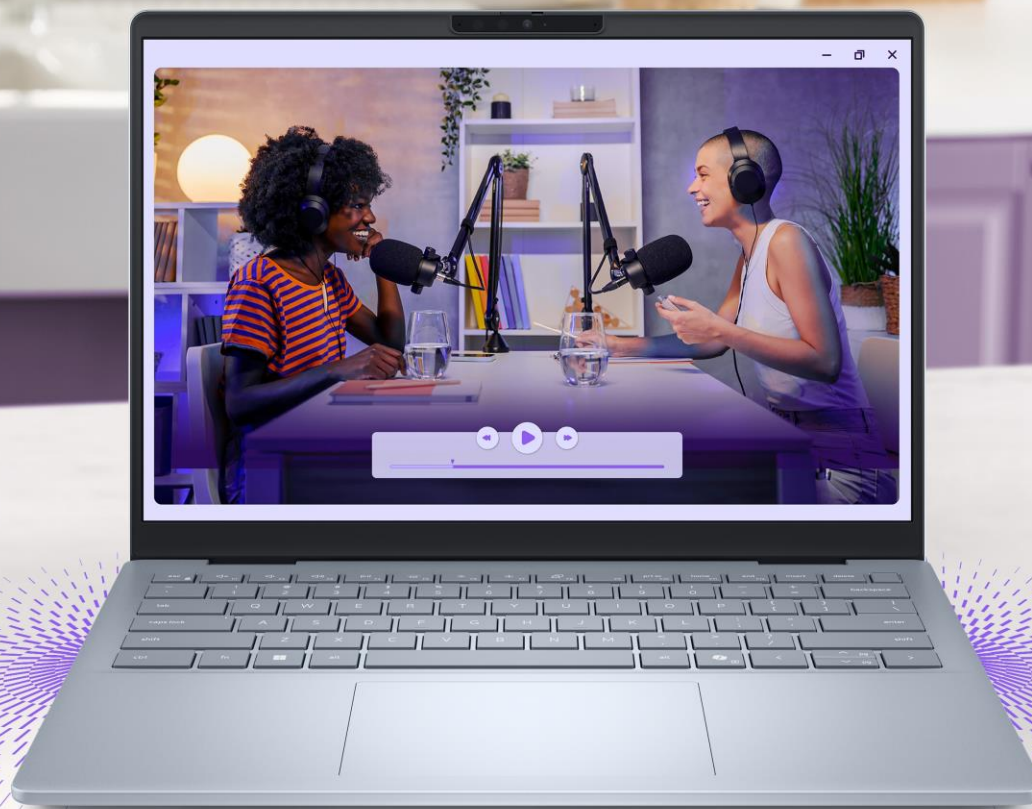
Elevated Front of Screen Experience



See your AI experiences truly come to life with the impressive front of screen experience on the Dell 14 Plus. Whether it is photo or video editing, coding, collaborating or even watching movies – let this spacious vibrant screen wow you.

Enjoy vivid colors and sharp details with up to **QHD+ resolution, upto 300 nits brightness and 100% sRGB and Dolby Vision**. With a 16:10 aspect ratio, your screen is taller and allows you to be productive without constant scrolling even with a smaller, thinner and more portable 14" size. Work for extended periods of time comfortably with inbuilt **Dell ComfortView Plus** which protects from harmful low blue light without compromising on true to life colors.

Also available in FHD+ resolution which offers a touch screen option that lets you interact more intuitively with your device. The **FHD+ Touch panel comes with the 16:10 screen with an edge to edge glass panel and upto 300nits brightness** for a vibrant, sharp view. **Dell ComfortView** software solution comes pre-installed for harmful low blue light reduction



Impressive Audio



Hear every detail with stereo quality speakers, powered by Waves Maxx Audio Pro and spatial audio with Dolby Atmos. Enjoy an immersive surround sound experience, hear and feel more, even in a busy café or train.

Connect confidently as you look and sound great while video conferencing with a built in FHD+ webcam* and always seem engaged thanks to AI-enabled auto framing that moves with you, and AI-enabled eye-contact keeps you looking engaged, even if you glance away. A mechanical privacy shutter ensures you have privacy on video calls when you want it and your PC is designed to optimize the best virtual collaboration experience.

*Configurations with FHD+ touch panel come with FHD+ webcam. Configurations with the QHD+ non-touch panels come with FHD+ IR camera that provides super accurate imaging, enabling earlier identification, at a greater distance of faster moving and smaller objects compared to other infrared cameras.



Why upgrade to the Dell 14 Plus

Impressive processing power

Featuring Intel® Core™ Ultra processors with dedicated engines for demanding tasks deliver exceptional performance, efficiency, & battery life.

Sleek, modern design

Stylish 14-inch laptop with on-device Copilot+ in a clean modern look and sophisticated Ice Blue color with tone-on-tone keyboard and a comfortable 180 bending hinge.

11% Slimmer*

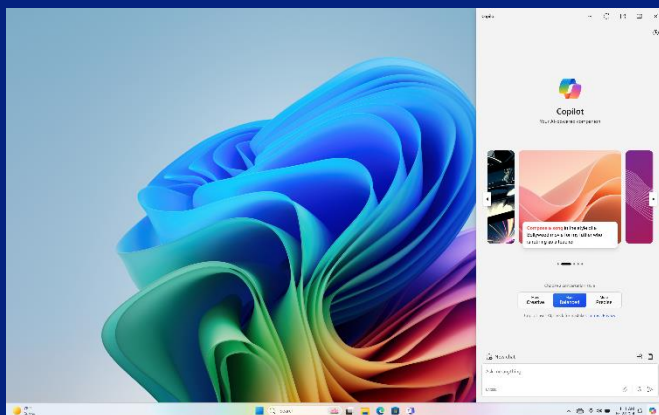
Starting weight 3.42 lbs. (1.55 kg)

No need to compromise style for power.

Up to 22 hrs* battery life

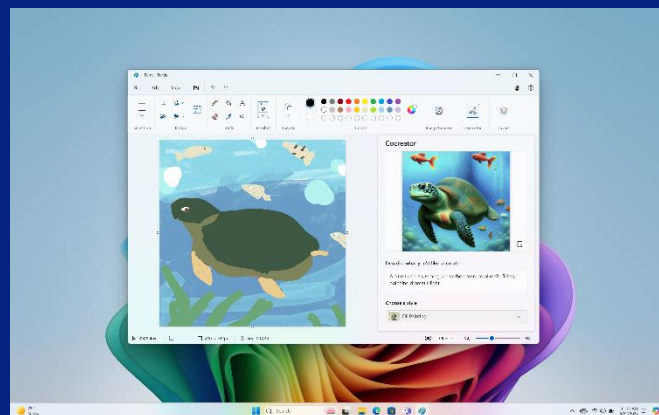
Work confidently wherever with impressive battery life that lasts during marathon sessions.

Do more with AI



Do

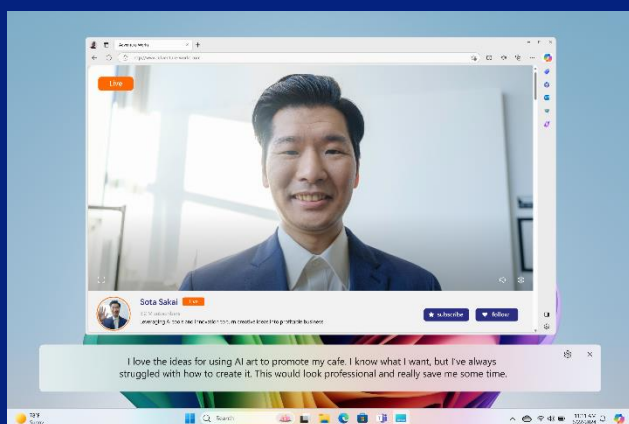
Get things done faster and find time to focus on what matters most to you with Copilot, your personal AI assistant. Make your online shopping easier, plan your next vacation or kickstart research for your class project in just a matter of minutes. With Microsoft 365 you can stay organized, collaborate and create content like a pro.



Create

Help bring your creative aspirations to life with custom images through Cocreator* in Paint. Enabled with advanced AI, you can now transform rough sketches with text and drawing prompts and make your vision come to life, just the way you want it.

*Cocreator is optimised for English text prompts. Requires Microsoft account.



Connect

No need for extra lights or soundproof rooms, the new Windows Studio Effects* help you look and sound your best. Voice Focus filters out background noise and makes sure you are heard. Meanwhile, an AI-enabled feature improves lighting and blurs visual distractions, so you're always the focus. With Live Captions, you stay connected and never miss a conversation. Instantly translate** your video calls or movies from any app or video platform into English subtitles in real time.



Find

Using simple prompts and natural language, AI recalls and instantly scans apps, files, emails and websites you've seen before to retrieve exactly the content you're looking for.

PCs ship with Recall* off by default, and you can activate during set up. You can choose the amount of system storage for Recall, and it will automatically delete the oldest files as your storage becomes full.

Secure and Reliable

Crafted with high quality materials and designed for the real world — because that's where life happens.



The Dell 14 Plus passed several stress tests to ensure exceptional reliability as you put it through the rigors of everyday..

Built to endure

From locker rooms to locked cars, we test laptops for survival in harsh short-term heat conditions of up to 65°C/149°F.

Buttoned-up

No matter what you set your power and multimedia buttons to do, we've tested them all to survive up to 40,000 pushes.

Everything hinges on it

We test laptop hinges to ensure they still feel tight, even after opening and closing the lid 20,000 times.

Twist and turn

Call us excessive, but after twisting a laptop's base and lid more than 7500* 4times (Test 2 edges and 2 corners), we can assure you the parts inside are well protected.

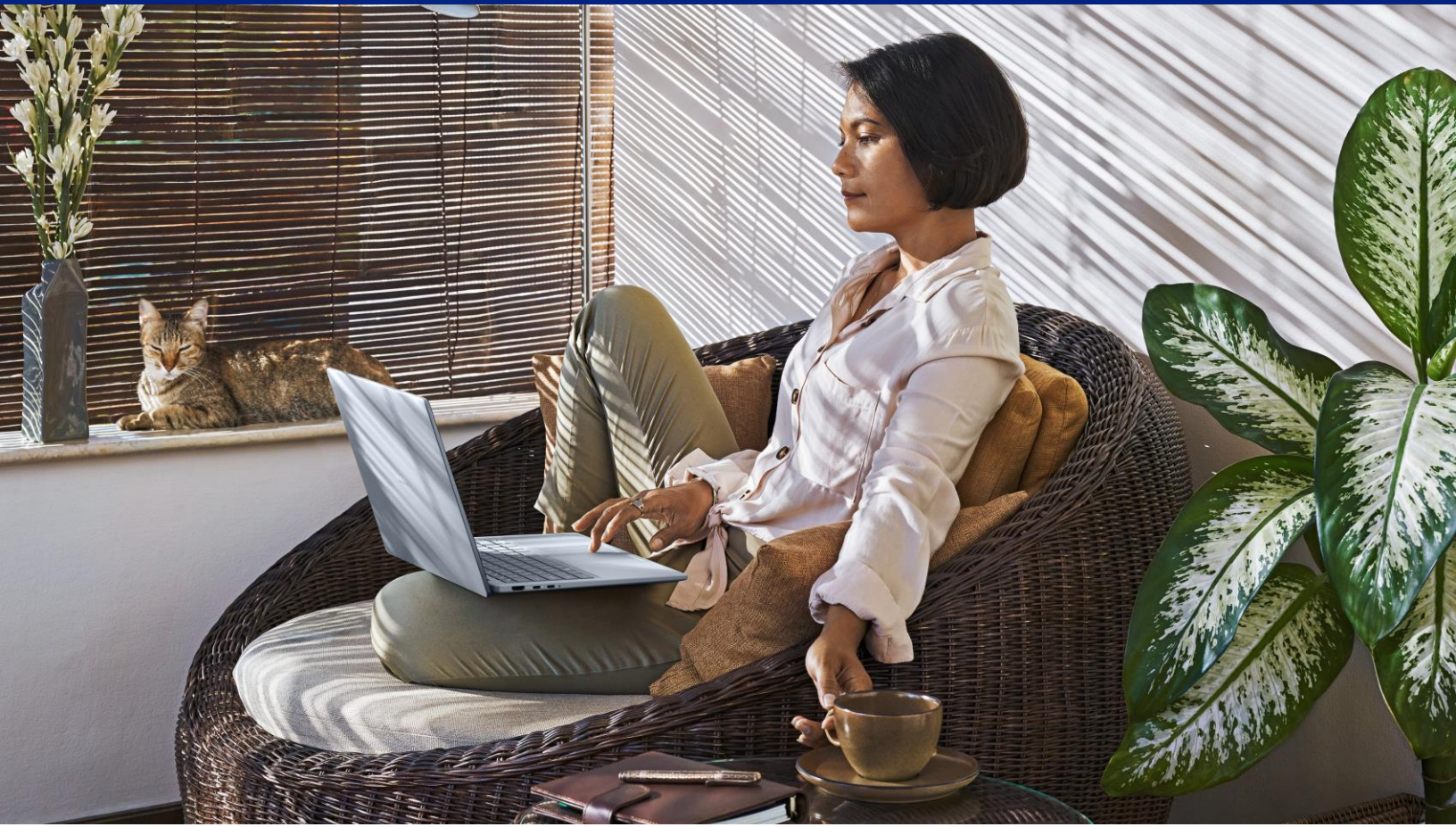
Fidget carefree

We even ensure the reliability of the webcam privacy shutter by opening and closing it 2100 times.

[CLM-013413](#)

Apart from the above, all Dell Plus products undergo Military grade stress testing, MIL-STD-810H, see details on page 20.

Plus, there is an additional layer of security with the built-in Trusted Platform Module to protect your data.



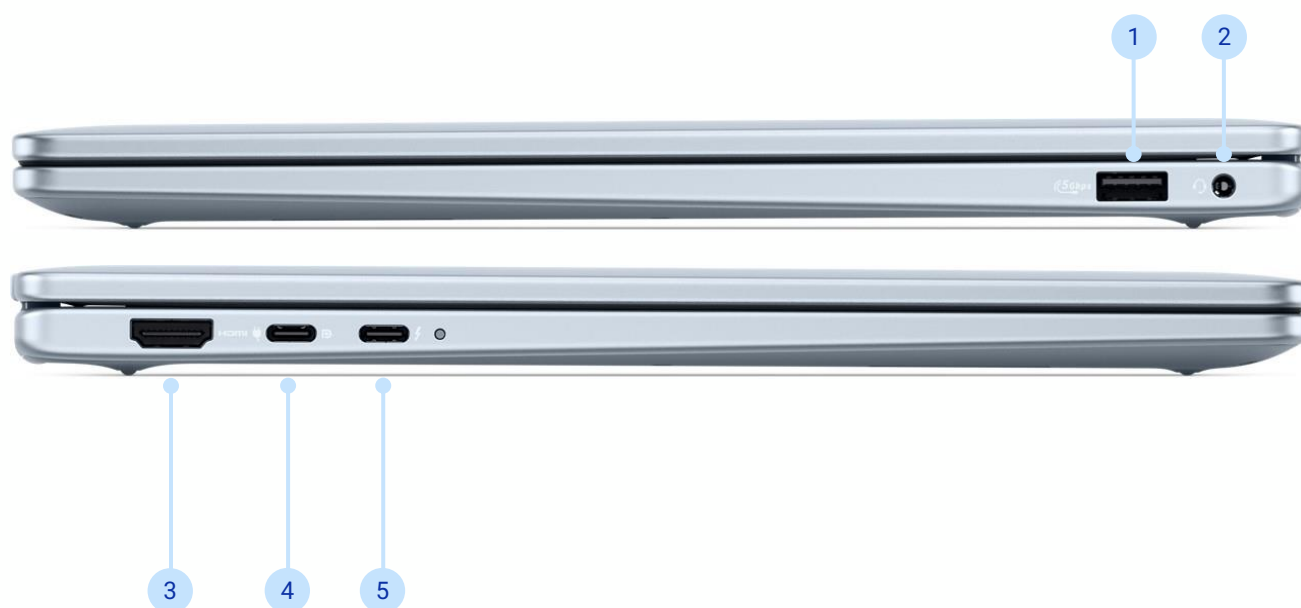
Built sustainably for unstoppable performance

Your laptop is designed with more sustainable materials like recycled and low emissions aluminum, recycled steel and recycled ocean-bound plastic while meeting the latest environmental standards like EPEAT Gold* with Climate+ and ENERGY STAR® 8.0 certification.

*Based on internal analysis December 2024 EPEAT Climate+ Designations achieved in all applicable countries. EPEAT registered where applicable. EPEAT registration varies by country. See www.epeat.net for registration status and tier levels by country.

[CLM-013212](#)

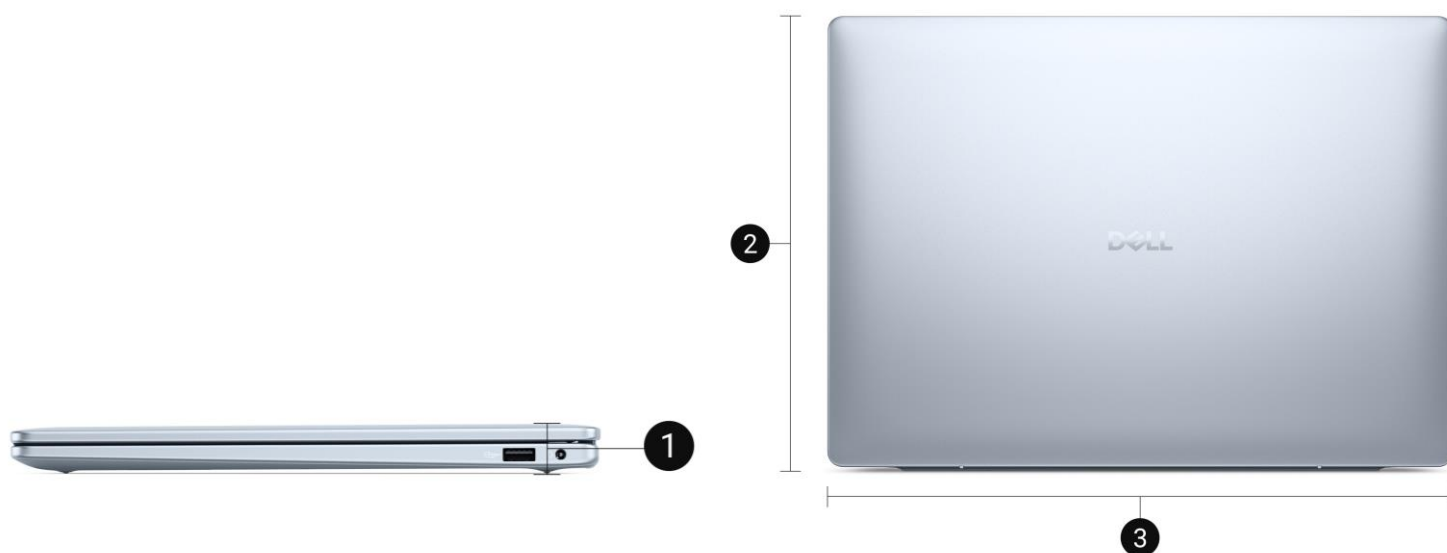
Ports & Slots



1. USB 3.2 Gen 1 Type-A (5Gbps)
2. Universal Audio Jack*
3. HDMI 2.1
4. USB 3.2 (10 Gbps) Type-C® port with DisplayPort™ 1.4 and Power Delivery
5. Thunderbolt™ 4 (40 Gbps) with DisplayPort™ 2.1 and Power Delivery

*Disclaimer: Universal Audio Jack: 3.5mm Universal Audio Jack functionality varies by model configuration. For best results, use Dell recommended audio accessories.

Dimensions & Weight



Height: 0.55" – 0.67" (14.00mm – 16.95 mm)

Width: 12.36" (314mm)

Depth: 8.90" (226.15 mm)

Starting Weight*: 3.42 lbs. (1.55kg)

Dell 65Watt USB-C Adapter



The Dell 14 Plus ships with a small, sustainable 65W USB-C power adapter, compatible across many Dell laptops. Built with 95% recycled plastic and 98% recycled aluminum** in key places, its chord is a convenient 3ft. (1m) long and has a cable clip to help pack up for travel.

*Weights vary depending on configurations and manufacturing variability.

Product Gallery

QHD+ Non touch panel



Product Gallery

FHD+ Touch panel



Feature	Technical Specification	Feature	Technical Specification
Model Number	DB14250	Optical Drive Options	No Optical Drive
Processor Options	Intel® Core™ Ultra 5 processor 226V (8MB Cache, 8 cores, up to 4.5 GHz) Intel® Core™ Ultra 5 processor 228V (8MB Cache, 8 cores, up to 4.5 GHz) Intel® Core™ Ultra 7 processor 256V (12MB Cache, 8 cores, up to 4.8 GHz) Intel® Core™ Ultra 7 processor 258V (12MB Cache, 8 cores, up to 4.8 GHz) Intel® Core™ Ultra 9 processor 288V (12MB Cache, 8 cores, up to 5.1 GHz)	Connectivity Options	Intel® Wi-Fi 6E AX211 Intel® Wi-Fi 7 BE201
Operating System*	Windows® 11	Battery Options*	4-Cell Battery, 64 Whr
Graphics	Intel® Arc™ 140V Graphics (tied to Ultra7 and Ultra9 processors) Intel® Arc™ 130V Graphics (tied to Ultra5 processors)	AC Adapter	65Watt USB-C Adapter
Display	14.0-inch 16:10 FHD+ (1920x1200) Touch 300nits WVA Display with ComfortView 14.0-inch 16:10 2.5K (2560x1600) Anti-Glare Non-Touch 300nits WVA/IPS Display w/ ComfortView Plus	Dimensions & Weight*	H/W/D: 0.55" – 0.67" x 12.36" x 8.90" (14.00mm – 16.95 mm x 314mm x 226.15 mm) Starting Weight: 3.42 lbs. (1.55kg)
Memory Options*	16GB, LPDDR5x, 8533MT/s, Integrated 32GB, LPDDR5x, 8533MT/s, Integrated	Color	Ice Blue
Storage Options*	512GB/1TB/2TB M.2 PCIe NVMe Solid State Drive	Security	Fingerprint Reader with Windows Hello (Optional) Webcam Privacy Shutter
Ports, Slots & Chassis	(1) HDMI 2.1, (1) USB 3.2 (10 Gbps) Type-C® port with DisplayPort™ 1.4 and Power Delivery, (1) Thunderbolt™ 4 (40 Gbps) with DisplayPort™ 2.1 and Power Delivery, (1) USB 3.2 Gen 1 Type-A,, (1) Universal Audio Jack	Software	Dell Optimizer (UUE), Dell Pair, Support Assist, Dolby Atmos
Multimedia	(2) tuned speakers, audio processing by Dolby Atmos Core and Waves MaxxAudio® Pro Audio jack FHD Camera (CG touch) or FHD+IR (non-touch) with dual digital Microphone array w/ AI noise reduction, w/ privacy shutter	Peripheral Ecosystem	Dell Premier Wireless ANC Headset - WL7024 Dell 6-in-1 USB-C Multiport Adapter - DA305 Dell EcoLoop Urban Backpack (Gray) - CP4523G Dell Premier Multi-Device Wireless Keyboard and Mouse - KM7321W Dell Multi-Device Wireless Keyboard and Mouse Combo - KM7120W Dell Premier Rechargeable Wireless Mouse (Graphite) - MS7421W Dell 27 Monitor - S2725DS Dell UltraSharp Webcam - WB7022
Input	Backlit, full-size, spill-resistant keyboard Multi-touch gesture-enabled precision touchpad with integrated scrolling	Regulatory and Environmental Compliance	Energy Star 8.0 EPEAT Gold Registry

NOTES:

Hard Drives: GB means 1 billion bytes and TB equals 1 trillion bytes; actual capacity varies with preloaded material and operating environment and will be less.

Graphics & System Memory: GB means 1 billion bytes and TB equals 1 trillion bytes; significant system memory may be used to support graphics, depending on system memory size and other factors.

Battery life figures are based on testing using the Mobile Mark 2014 battery life benchmark test. For more information about this benchmark test, visit www.bapco.com. Test results should be used only to compare one product with another and are not a guarantee you will experience the same battery life. Battery life may be significantly less than the test results and varies depending on your product's configuration, software, usage, operating conditions, power management settings and other factors. Maximum battery life will decrease with time and use.

Watt Hour (Whr) - The stated Watt Hour (Whr) is not an indication of battery life.

Notebook Weight: Weights vary depending on configuration and manufacturing variability.

Recommended Accessories



Dell 27 Monitor - S2725DS

A 27-inch QHD monitor that optimizes eye comfort and features impressive visuals with outstanding acoustics in a lifestyle-inspired design.



Dell UltraSharp Webcam - WB7022

Experience best image quality in its class with the world's most intelligent 4K webcam.



Dell Premier Multi-Device Wireless Keyboard and Mouse (Co-Pilot) - KM7321W

Experience superior multitasking features with a stylish and comfortable premium keyboard and mouse combo. Complete your tasks powered by one of the industry's leading battery lives at up to 36 months.



Dell 6-in-1 USB-C Multiport Adapter | DA305

A compact multiport 6-in-1 adapter that offers video, network, data connectivity and up to 90W power pass-through for your laptop.



Dell Premier Rechargeable Wireless Mouse - MS7421W

Get uninterrupted productivity with a rechargeable mouse that offers up to six months battery life on a full charge and recharges in just two minutes for a full day's work.



Dell Premier Wireless ANC Headset - WL7024

Stay focused anywhere with an intelligent wireless headset, featuring dual-directional AI-based noise cancellation and Adaptive ANC.



Dell EcoLoop Urban Backpack (Blue/Gray) - CP4523B/ CP4523G

Designed for organization and comfort, the Dell EcoLoop Urban Backpack 14-16 is built with the environment in mind and easily complements any lifestyle.

PROJ-001552

Configuration	Netflix streaming	HD video playback
Config 1: Ultra 5 226V , QHD+ NT, 16GB, 1TB SSD	Up to 16 hours with QHD+	Up to 21 hours with QHD+
Config 2: Ultra 5 228V, QHD+ NT, 32GB, 1TB SSD	Up to 14 hours with QHD+	Up to 19 hours with QHD+
Config 3: Ultra 7 256V, FHD+ T, 16GB, 1TB SSD	Up to 15 hours with FHD+	Up to 22 hours with FHD+
Config 4: Ultra 7 256V, QHD+ NT, 16GB, 1TB SSD	Up to 16 hours with QHD+	Up to 20 hours with QHD+
Config 5: Ultra 7 258V, QHD+ NT, 32GB, 1TB SSD	Up to 18 hours with QHD+	Up to 22 hours with QHD+
Config 6: Ultra 9 288V, QHD+ NT, 32GB, 1TB SSD	Up to 17 hours with QHD+	Up to 20 hours with QHD+
Config 7: Ultra 9 288V, FHD+ T, 32GB, 1TB SSD	Up to 19 hours with FHD+	Up to 22 hours with FHD+

Disclaimers:

- [illegible]

NOTE: The stated Watt Hour (Whr) is not an indication of battery life.

Claims

Weight Claim

- The Dell 14 Plus (DB14250) weight* is starting from 1.55 kg (3.42 lb) when equipped Intel® Core™ Ultra 5 processor xxx, Intel® Arc™ Graphics, 16GB LPDDR5x memory, 512GB SSD, 2.2K Non-touch 250 nits WVA display, 4 cell 64 WHr battery. [CLM-013492](#)

*Weights vary depending on configuration and manufacturing variability.

TUV Certification

[CLM-013418](#)

The Dell 14 Plus with an FHD+ panel is TÜV Rheinland certified* with Dell ComfortView software technology that helps reduce harmful blue light emissions.

*TUV Certified (ID# 1111295496). Certificate No. Q 50660227. For more details, visit www.tuv.com

[CLM-013417](#)

The Dell 14 Plus with a QHD+ panel is TÜV Rheinland certified* with Dell ComfortView Plus hardware technology that helps reduce harmful blue light emissions without compromising on true to life colors to optimize eye comfort over extended periods of screentime.

*TUV Certified (ID# 1111295495). Certificate No. Q 50660225. For more details, visit www.tuv.com



MIL 810 Testing Claims

The Dell 14 Plus passed 17 MIL-STD-810H tests.*

Test Category	Test Method	Test Results
MIL-STD-810H, Method 500.6, Procedure I	Altitude - Storage / Air Transport	PASS
MIL-STD-810H, Method 500.6, Procedure II	Altitude - Operational / Air Carriage	PASS
MIL-STD-810H, Method 501.7, Procedure I	High temperature - - Induced (Storage and Transition) Conditions	PASS
MIL-STD-810H, Method 501.7, Procedure II	High temperature - Operation Cycling temperature exposure	PASS
MIL-STD-810H, Method 502.7, Procedure I	Low temperature - Storage	PASS
MIL-STD-810H, Method 502.7, Procedure II	Low temperature - Operational	PASS
MIL-STD-810H, Method 503.7, Procedure I-A	Temperature Shock - One-Way Shock(s) from Constant Extreme Temperature	PASS
MIL-STD-810H, Method 507.6, Procedure I	Humidity: Induced (Storage & Transit) Cycles Natural Cycles	PASS
MIL-STD-810H, Method 510.7, Procedure I	Sand and dust - Blowing dust	PASS
MIL-STD-810H, Method 514.8, Procedure I, Table 514.8C-II Category 4	Vibration	PASS
MIL-STD-810H, Method 514.8, Procedure I, Category 24	Vibration - Minimum integrity test	PASS
MIL-STD-810H, Method 516.8, Procedure I	Shock - Functional Shock	PASS
MIL-STD-810H, Method 516.8, Procedure II	Shock, Transportation Shock	PASS
MIL-STD-810H, Method 516.8, Procedure IV	Shock - Transit Drop	PASS
MIL-STD-810H, Method 516.8, Procedure V	Shock - Crash Hazard Shock	PASS
MIL-STD-810H, Method 516.8, Procedure VI	SHOCK - Bench Handling	PASS
MIL-STD-810H, Method 524.1, Procedure III	Freeze/Thaw - Rapid Temperature Change	PASS

[CLM-013410](#)

*Based on testing and certification to MIL-STD-810H standards, performed and reported independently by accredited testing companies, May 2024. Actual results may vary; testing results do not guarantee performance under test conditions. Dell does not represent that this product meets United States Department of Defense requirements for military use.



Services for Dell Plus

Dell has services to help with technology needs throughout the life of your device. Our mission is to be the technology services provider you trust to keep you connected and productive so you can focus on doing more.

Dell Care Premium: Built for you, backed by us.

Enjoy the best in personal PC care with 24/7 expert support for all your hardware and software needs. If we can't fix it remotely, a Dell technician will come to you for Onsite Support¹. SupportAssist² predicts and resolves issues while keeping your PC fast, connected and stable. You'll also get data backup help, parental control setup, and repairs for accidents like drops and spills with no hidden fees or deductible. Plus, stay connected with international travel support.

ProSupport Plus for PCs your business solution

For Windows Pro OS, upgrade to ProSupport Plus for your business needs. Automate and customize support to eliminate downtime across your fleet. Get 24/7 priority access to in-region technical support, next business day onsite repairs and proactive monitoring. Plus, accidental damage coverage, self-healing automated remediation and more.

Accidental Damage Service³

Stay worry-free with protection from accidental drops, spills and electrical surges. Access to repairs is easy, with support designed to keep you up and running at your best. Accidental Damage is included with Dell Care Premium and ProSupport Plus.

Disclaimers:

¹. Onsite Support: Onsite service after remote diagnosis (a) Onsite Service after remote diagnosis is determined by the online or phone technician, and may involve customer access to the inside of the system and multiple extended sessions. If the issue is covered by the Limited Hardware Warranty and cannot be resolved remotely, the technician and/or replacement part will be dispatched, usually in 1 or 2 business days, following the completion of the remote diagnosis. The customer must return the original hardware to Dell according to the rules specified. On-site service is provided by Dell Marketing L.P. Availability varies. Other conditions apply. (b) Advanced Exchange Service replaces hardware after remote diagnosis. The customer must return the original hardware to Dell according to the rules specified. Advanced Exchange Service is subject to country availability. (c) For complete details about On-site Service or Advanced Exchange Service, see dell.com/servicecontracts

². SupportAssist: For supported systems and requirements, please refer to our user guide (SupportAssist for Home PCs version for personal use) or administrator guide (SupportAssist for Business PCs version for PC fleet management) and click "supported PCs". Proactive and predictive capabilities depend upon your active service plan and Dell Technologies business rules. For ProSupport Suite for PCs capabilities, view our administrator guide and click "Connect and manage capabilities and Dell service plans". For Dell Care Suite, Premium Support Suite, or Alienware Care Suite for PCs capabilities, view the user guide and click "SupportAssist capabilities and Dell Services plans".

³. Accidental Damage Service: Accidental damage coverage excludes theft, loss, and damage due to fire, flood, or other acts of nature, or intentional damage. Customer must return damaged unit. Limit of 1 qualified incident per contract year.

Important details

Hard Drives: Hard Drive capacity varies with preloaded material and will be less.

Graphics & shared memory: System memory may be used to support graphics, depending on system memory size and other factors.

Weight: Weights vary depending on configuration and manufacturing variability.

Limited hardware warranty: Limited Hardware Warranty is available by writing: Dell USA LP, Attn: Warranties, One Dell Way, Round Rock, TX 78682 or See dell.com/warranty.

Accidental Damage: Accidental Damage Service excludes theft, loss, and damage due to fire, flood or other acts of nature, or intentional damage. Customer must return damaged unit. Limit of 1 qualified incident per contract year.

See dell.com/servicecontracts.

Mail-In Service for Repair after Remote Diagnosis: Mail-In Service after Remote Diagnosis is determination by online/phone technician of cause of issue; may involve customer access to inside of system and multiple or extended sessions. If the issue is covered by Limited Hardware Warranty and not resolved remotely, shipping instructions will be provided. Availability varies. See dell.com/servicecontracts.

Rapid Return for Repair after Remote Diagnosis: Rapid Return for Repair after Remote Diagnosis is determination by online/phone technician of cause of issue, which may take multiple extended sessions. If issue is covered by Limited Hardware Warranty and not resolved remotely, shipping instructions will be provided. Next Business Day shipping not available in all areas, which may delay repair and return times. See [Terms and Conditions](#).

*EPEAT registration varies by country. Please see www.epeat.net for specific country registration and rating.