



Get a productivity upgrade

DELL 19 MONITOR | P1917S



ENHANCED PRODUCTIVITY

Transform the way you work with this 19" monitor specifically configured for multiple connectivity and advanced efficiency.



IMPROVED COMFORT

Elevate comfort and convenience with this 19", 5:4 aspect ratio monitor, designed to display stunning visuals, without inducing eye fatigue.



SMART INVESTMENT

Future proof your workspace with a wide range of digital ports and flexibility to configure your display as you please.



TRUSTED RELIABILITY

As the world's #1 monitor brand*, we take pride in our unyielding commitment to quality and the utmost satisfaction of our customers.

Maximize comfort and convenience



ENHANCED PRODUCTIVITY

Enjoy a better visual experience: The slim border design creates a seamless workflow with less visual obstruction when working across multiple monitors.

Personalize your visual setting: Efficiently auto-apply predefined color settings for various applications via **Dell Auto Mode**.

Connect to productivity: Multiple connectivity ports allows you to easily connect to various devices.



IMPROVED COMFORT

Adjust to your comfort: Pivot, tilt, swivel and adjust the height of your monitor for a comfortable setup all day long. Or choose from a variety of mounts and stands, including VESA, for even more flexibility.

Optimize eye comfort: This TÜV¹ Certified monitor has a flicker-free screen with ComfortView², a feature that reduces harmful blue light emissions. It's designed to optimize eye comfort even over extended viewing.

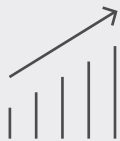
Consistent and rich colors: A wide viewing angle enabled by In-Plane Switching (IPS) technology lets you see vibrant colors — no matter where you sit.



SMART INVESTMENT

Future proof your connectivity: This 19" monitor offers a wide range of digital ports as well as a variety of mounting options and accessories to flexibly configure your office.

Eco-elegant design: Dell's eco-conscious design meets the latest regulatory and environmental standards such as ENERGY STAR[®], EPEAT[®] registered where applicable³, TCO Certified Displays, CEL, CECP.



DELL DISPLAY MANAGER

More ways to multitask: Work conveniently across multiple screens and select from predefined templates with the **Easy Arrange** feature on Dell Display Manager software. Quickly tile and arrange your applications and get back to work faster with **Auto-restore**, a feature that remembers where you left off.

Easily optimize your view: Automode easily configures display settings for a great front of screen experience.

Manage your display inventory: Generate an asset management report to tag display ID and settings within your business environment.



THANK YOU FOR MAKING DELL MONITORS #1 WORLDWIDE*

Peace of mind: Dell Premium Panel Exchange⁴ allows a free panel replacement during the Limited Hardware Warranty⁶ period even if only one bright pixel is found.

Minimize downtime: Your monitor comes with a 3-year Advanced Exchange Service⁵ so that if a replacement becomes necessary, it will be shipped to you the next business day during your 3-year Limited Hardware Warranty⁶.

Get a higher level of support: Upgrade to 24x7, in-region technical phone support from qualified engineers with Dell ProSupport option.⁷

Features & Technical Specifications

Monitor	Dell 19 Monitor – P1917S
Diagonal Viewing Size	48 cm (19 inches)
Active Display Area	
Horizontal	374.78 mm (14.76 in)
Vertical	299.83 mm (11.80 in)
Maximum Preset Resolution	1280 x 1024 at 60 Hz
Aspect Ratio	5:4
Pixel Pitch	0.293 mm x 0.293 mm
Brightness	250 cd/m ² (typical)
Color Support	Color Gamut (typical): 84% ⁸ Color Depth: 16.7 million colors
Contrast Ratio	1000:1 (typical)
Mega Dynamic Contrast Ratio	4 million:1
Viewing Angle	178°/178°
Response Time	6 ms gray-to-gray (typical)
Panel Type	In-Plane Switching (IPS) technology
Backlight Technology	LED
Other	ComfortView ²
Bezel Color	Black
Connectivity	
Connectors	DisplayPort 1.2, HDMI 1.4, VGA, 2 x USB 3.0 (side), 2 x USB 2.0 (bottom)
Design Features	
Adjustability	Tilt (Typical: 5° forward or 21° backward), pivot (90°), swivel (45°), height adjustable (130 mm)
Security	Security lock slot (security lock not included)
Flat Panel Mount Interface	Dell Quick Release feature (100 x 100 mm) (wall mount sold separately)
Power	
AC input voltage/frequency/current	100 to 240 VAC / 50 or 60 Hz ± 3 Hz / 1.5 A (typical)
Power Consumption (Operational)	14W (typical, without USB load); 38W (Max.)
Power Consumption Stand by / Sleep	Less than 0.3 W
Dimensions (with stand)	
Height (Compressed ~ Extended)	369.3 mm ~ 499.3 mm (14.54 inches ~ 19.66 inches)
Width	405.6 mm (15.97 in)
Depth	180.0 mm (7.09 in)
Weight	
Weight (panel only – no stand)	2.60 kg (5.73 lb)
Weight (with stand)	5.13 kg (11.31 lb)
Shipping Weight	6.61 kg (14.57 lb)
Standard Service Plan	3 years Advanced Exchange Service ⁵ , Limited Hardware Warranty ⁶ , 3 years Premium Panel Exchange ⁴
Optional Service Plan	Dell ProSupport ⁷
Environmental Compliance	ENERGY STAR [®] , EPEAT [®] registered where applicable ³ , TCO Certified Displays, BFR/PVC-free monitor (excluding cables), CEL, CECP, RoHS, WEEE, ErP (EuP) Standards, Korea E-Standby

What's in the box?

Components

- Monitor with stand (riser and base)

Cables

- Power cable (varies by country)
- DisplayPort cable (mini-DP to DP)
- VGA cable
- DisplayPort cable
- USB 3.0 upstream cable

Documentation

- Quick Setup Guide
- Safety and regulatory information
- Drivers and documentation media (CD)

Adjustability and connectivity

DELL 19 MONITOR | P1917S

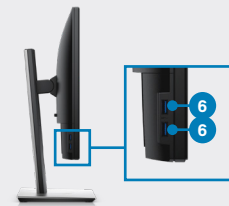
Easily adjust the panel to your preferred viewing position.



Connectivity



- 1 Power port
- 2 HDMI
- 3 DisplayPort
- 4 VGA
- 5 USB upstream
- 6 USB downstream
- 7 Stand lock feature

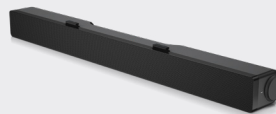


RECOMMENDED ACCESSORIES



DELL DUAL MONITOR STAND | MDS14A

Optimize your desktop space by fitting two monitors on one single stand, offering a great view with minimal bezel interference.



DELL SOUNDBAR | AC511

Get stereo surround sound with the Dell soundbar. Snap it snugly onto the bottom of the monitor to enjoy high quality audio.



DELL WIRELESS KEYBOARD AND MOUSE | KM636

Keep your workspace tidy and cable-free with a wireless combo. Pair up to 6 devices with Dell Universal Pairing.

* Dell monitors are #1 Worldwide for 6 consecutive years (2013 to 2018)! Source: IDC Worldwide Quarterly PC Monitor Tracker, Q4 2018.

1 Certified (ID0000051369 - Flicker Free / ID0000051370 - Low Blue Light Content).

2 ComfortView, a feature that reduces up to 60% of harmful blue light emissions, help optimize eye comfort over extended viewing periods.**

Disclaimer - **Available on select Dell E, P and U series monitors. Based on Dell internal analysis, August 2018. Actual blue light reduction will vary by model.

3 EPEAT registered where applicable. EPEAT registration varies by country. See www.epeat.net for registration status by country.

4 The Dell Premium Panel Exchange allows a free panel replacement during the Limited Hardware Warranty even if only one bright pixel is found. Source: <https://www.dell.com/learn/us/en/04/campaigns/dell-premium-panel-guarantee>

5 Advanced Exchange: Dell will send you a replacement monitor the next business day in most cases, if deemed necessary after phone/online diagnosis. Shipping times may vary by location and for monitors 55" and above. Fee charged for failure to return defective unit. See dell.com/servicecontracts/global.

6 For a copy of the Limited Hardware Warranty, write to Dell USA LP, Attn: Warranties, One Dell Way, Round Rock, TX 78682 or see dell.com/warranty.

7 Availability varies, please visit www.dell.com/support for details.

8 Color gamut (typical) is based on CIE1976 (84%) and CIE1931 (72%) test standards.

Dell.com/monitors Product availability varies by country. Please contact your Dell representative for more information.

© 2019 Dell. All rights reserved.

Trademarks or trade names may be used in this document to refer to either the entities claiming the marks and names of their products. Dell disclaims proprietary interest in the marks and names of others. Reproduction in any manner whatsoever without express written permission from Dell is strictly forbidden.

